

cancerless

Current issues in the delivery of cancer care for people experiencing homelessness

Exposure to risk factors for poor health

Lack of access to healthcare services

Communication Issues

Lack of practical support

Fragmented care

Limited access to info

Resource scarcity



Cancer-related mortality is **twice as high** for people experiencing homelessness

Pathways to results

1. Less exposure to risk health factors among PEH

Monitoring housing inequalities, investment in affordable housing, access to safe accommodation and engagement in meaningful activities.

2. Access to integrated care

Integration of social, economic, and health sectors, improved accessibility of prevention services, interventions to form trusting relationships, and flexible healthcare systems are crucial aspects to consider.

3. Access to info and awareness of cancer prevention

Improving education and health literacy, raising awareness on a systems level, collaborating with community partners, and aligning different institutions, political bodies and academia at the EU level.

4. Access to healthcare services

Enhanced healthcare access and navigation, adoption of tailored and person-centered approaches, integration of cancer prevention initiatives into existing healthcare services, upvaluing outreach programs, involving social care professionals and homelessness support services in cancer prevention programs, providing training and actively involving community champions.

5. Effective communication

Implementing longitudinal health interventions, adopting a multidisciplinary approach to cancer care, including translation services and cultural mediators, capacity-building for frontline professionals, ensuring inclusion in digital health and technology, and promoting the ethical use of technology.

6. Availability of resources for PEH

Allocate to and utilize appropriate resources within health systems.

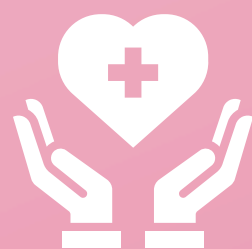
7. Availability of practical support for PEH

Establishing familiar and trusted spaces for cancer prevention and ensuring integrated care throughout the cancer care trajectory.

Policy Outcomes

Healthcare system

Equitable healthcare for people experiencing homelessness (PEH) ensures tailored and inclusive treatment, integrates cancer prevention into existing services, provides direct and multilingual outreach, and offers flexible point-of-care delivery.



People experiencing homelessness

Optimizing personal empowerment to reduce poor health outcomes and appropriate healthcare utilization due to a more navigable healthcare system.